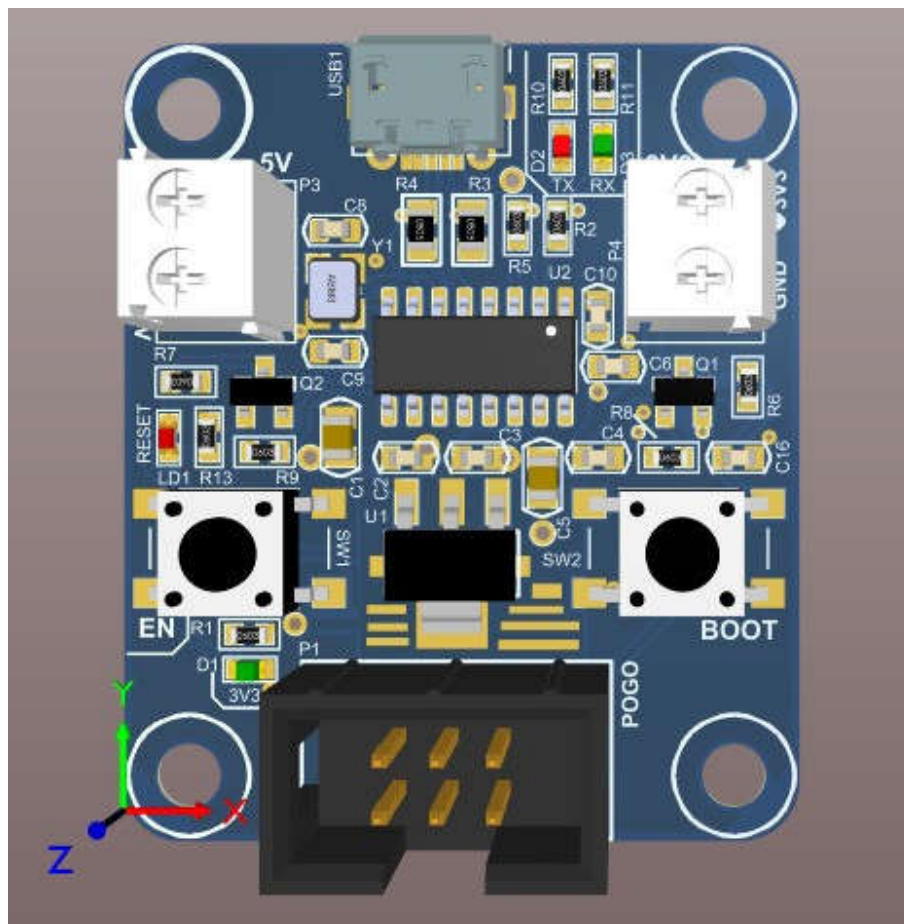


ESP32- Programmer Datasheet



*PCB color may change based on stock

Overview

ESP32- Programmer worked based on USB to Uart Bridge CH340c, along with ESP32 transistor logic
Additional LM11117 added for 3.3v 1A current requirements

Notes

- > No USB cable provided along with this package.
- > Internal Supply is limited to 500mA. Overloading will cause board failure.
- > Support 3.3V and 5V operation

Usage

1. ESP32 Programming using Arduino/ESP-ide

->Connect the ESP32 board side to the Output IDC connector using jumper wires of IDC cable. Pinout described below

->Connect the USB side to computer.

->external Supply required for the Board, if the board is connected to many peripheral device

-> Select the port in Arduino, or ESP IDF or any programming ide having virtual port

-> Select the right chip model. And do the programming

2. As USB to Uart Bridge

->connect RX, TX of ESP Programmer board to the desired MCU, like

Rx<-TX

TX->Rx

Use a serial monitor application and select the Port

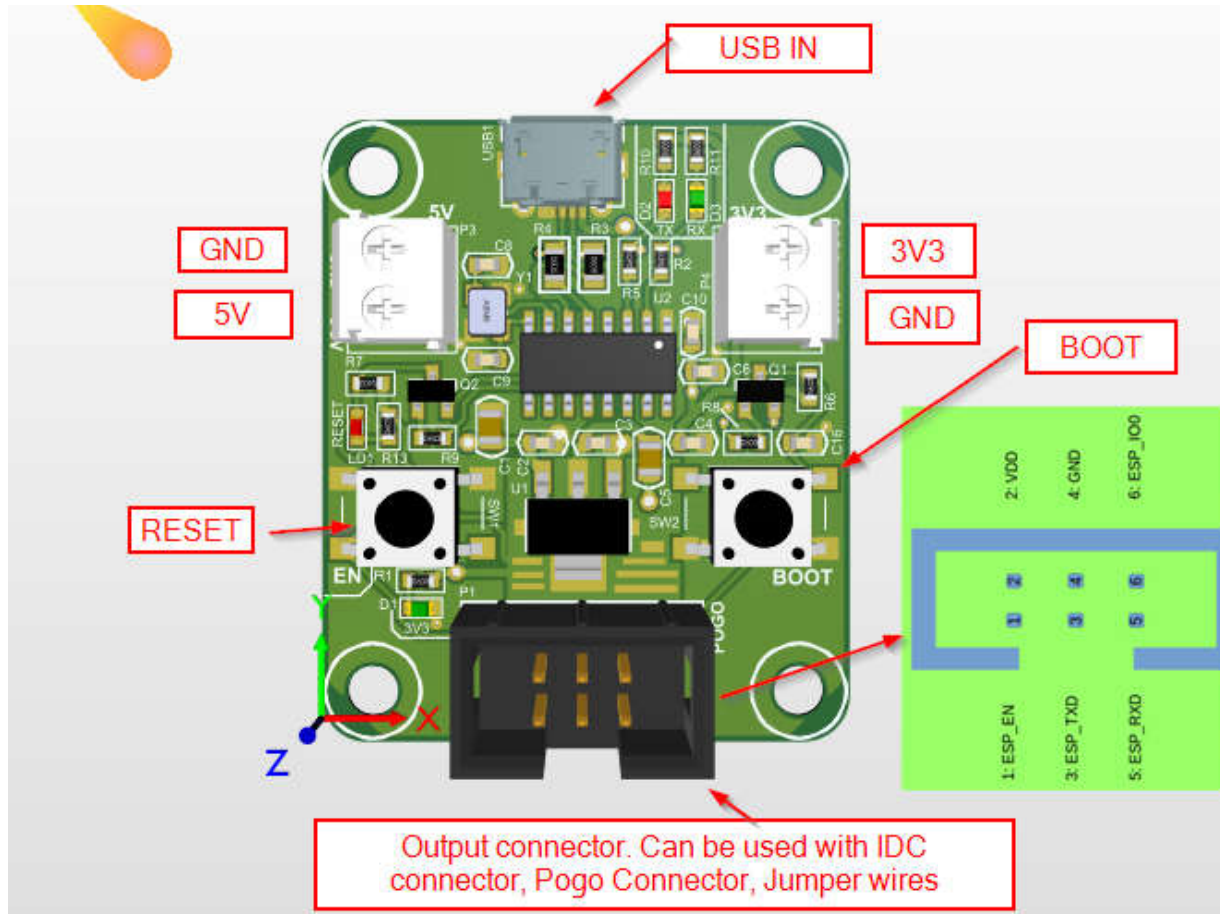
3. Along With Pogo Pen

Pogo connector will be used on PCB, where very compact size required, and no room for Program connector.

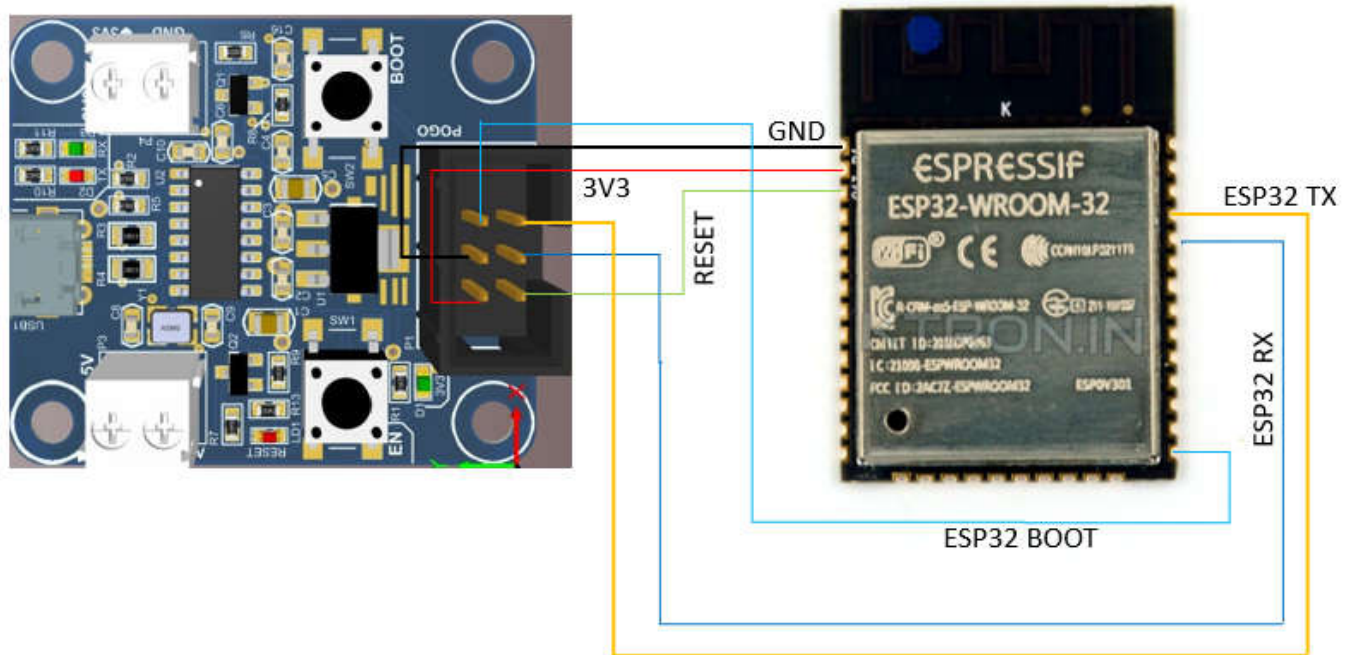
See the below link for pogo connector



Pinout



Connection Diagram



Reference

<https://www.mpja.com/download/35227cpdata.pdf>